

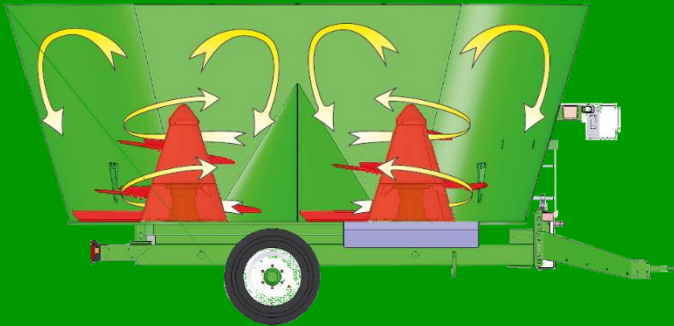


# Vertical Feed Mixers

Twin Auger – VD Series

Specifications:	MV-24-D	MV-26-D	MV-30-D
Empty Weight – Side Discharge	17,571 lbs	17,835 lbs	18,166 lbs
Empty Weight – Front Discharge	18,077 lbs	18,341 lbs	18,672 lbs
Height	122"	129"	135"
Overall Width	96"	96"	96"
Overall Length – Side Discharge	311"	315"	315"
Overall Length – Front Discharge	318"	318"	320"
Min. PTO Power Required	110 HP	120 HP	130 HP
Capacity Struck Level	845 Cu. Ft.	915 Cu. Ft.	1,056 Cu. Ft.

Tatoma reserves the right to change designs and specifications without notice.



#### Tatoma's Mixing System and Auger Design Benefits:

- ✓ Proven Consistent Mixing by Nutritionist
- ✓ Low Power Consumption
- ✓ Ideal Product Flow
- ✓ Maximum Use of Tub Mixing Volume
- ✓ Respects the Structure of the Ingredients of the Mixture

## Quality Mixers Since 1981



Dealer

Tatoma USA  
 6238 Highway 412  
 Colcord, OK 74338  
 (918) 422-4271  
 (479) 228-4580

sstovall@grupotatoma.com  
 tatomainfo@centurylink.net  
 mcantos@grupotatoma.com

[www.TatomaUSA.com](http://www.TatomaUSA.com)



Search for:  
**Tatoma USA**





# Vertical Feed Mixers

Large Twin Auger – MVD Series



## Models:

MV-24-D (845 Cubic Foot)

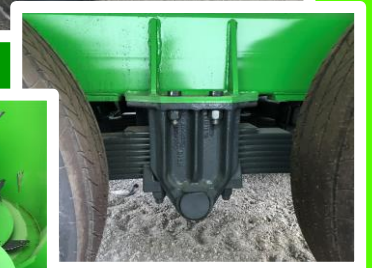
MV-26-D (915 Cubic Foot)

MV-30-D (1,056 Cubic Foot)

## Standard Features:

- 8mm (.31") Thick Side Walls
- 15mm (.59") Thick Augers
- 25.4mm (1") Thick Floor
- 9 Big Knives and 2 Small Knives on Each Auger (Total of 22 Knives)
- Heavy Duty Two Speed Gearbox – Manual Operation
- Automatic Planetary Cooling System with Electric Fan
- Tandem Axle with Rear Self-Steer
- Hydraulic Brakes and Manual Hand Brake
- 8 Dual Truck Tires (275/70/22.5)
- Side Discharge – One Door on Each Side with Automatic Drop Chute
- Manual Hydraulic Front Jack
- Rotating Swivel Hitch
- Solid Anti-Overflow Ring
- 1,000 RPM PTO
- 4 Manual Hay Retainers
- Battery and Battery Support
- Direct Hydraulic Hoses to Tractor
- Two Heavy Duty Augers
- Programmable Perin Farmscale M800 Scale Indicator
- 4 Heavy Duty Load Cells Under the Tub
- Tub, Floor, & Augers Constructed in Heavy Duty ST52 Steel
- Heavy Duty Spring Suspension
- Viewing Platform with Dual Side Ladder Access

**Optional: High Wear Resistant Strenx/Quend 700 Steel in lieu of ST52**



**Optional: Front Conveyor and Single Tires**

